



LR01

Laufenn

A Brand by Hankook Tire

M+S



When the blue that represents rational value and the red that represents emotional value meet, the violet of Laufenn is born. Laufenn provides transport professionals with both practical value and satisfaction.



Laufenn - exceptional 'on road' performance delivering transport partner value.

Laufenn provides the performance you need in all usage conditions, designed for transport professionals.

Laufenn offers a product for all professional transport partners

The Laufenn brand offers customers that are seeking value, quality and performance a wide range of quality products to meet a broad variety of driving conditions. No matter the season, no matter the road conditions, Laufenn will bring you reliably throughout your journey.

Manufactured by a premium TBR manufacturer

Laufenn tyres are designed by experienced engineers at state-of-the-art facilities in order to provide high tech products fitting to all the needs and expectations of demanding customers. The products are produced with the latest automated equipment at large scale ISO-certified plants, where quality is guaranteed.

Built with Quality and Reliability in mind

The Laufenn quality policy provides superior products and services to satisfy the needs of our customers all over the world. In this quickly changing world we offer you up-to-date products that target your day-to-day needs and help you to reach your destinations at ease.

The value choice for professional partners

Making sure that you can extract all of the value designed and manufactured into the tyre range. Laufenn tyres are designed to deliver maximum mileage performance, making them the right choice for the 'value' focused transport professional.



LR01

All-Position On and Off-Road Tyre



Wet



Dry



Traction

All-position tyre for on and off-road applications. The special tread compound prevents the tyre from damages and prolongs the life of the tyre. Wide shoulders and zigzag grooves provide excellent grip and traction on wet and dry roads.

FEATURES

Optimised design using IMS
(Innovative Mixing System) &
IPD (Improved Profile Design)

LR01

Available Sizes :

13R22.5 and 315/80R22.5

Speed Symbol : K

N.S.W : 315

Series : 80

Inch : 22.5

EU Label : D / C / W1



Optimised Design for On and Off-Road All-Position Tyre



Wet

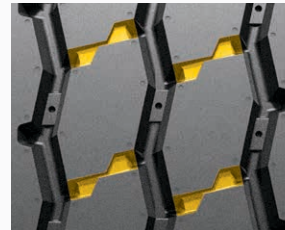
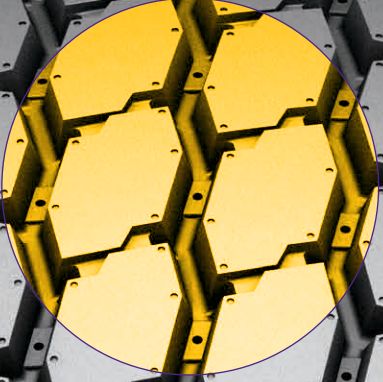


Durability



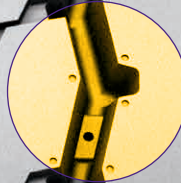
Off-Road

Unique pattern design for enhanced water drainage and safety from stone drilling.



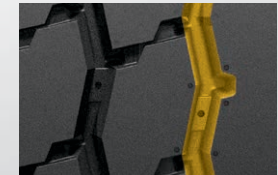
Tread Surface Grooves Provide Good Water Drainage

Lateral surface grooves between the blocks provide excellent water drainage.



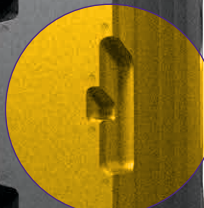
Tread Design Keeps Stones Out

Special tread design features stone ejectors which will prevent stone drilling and help to extend the life of the tyre.



Two-Step Shoulder Lug Shape

More powerful grip with two-step shoulder lug shape and anti-tearing suitable for on and off-road conditions.



Innovative Mixing System & Improved Profile Design



Innovative mix of compounds within the tyre provide long mileage and impressive fuel efficiency. SCCT improves performance, safety, cornering, braking and durability.

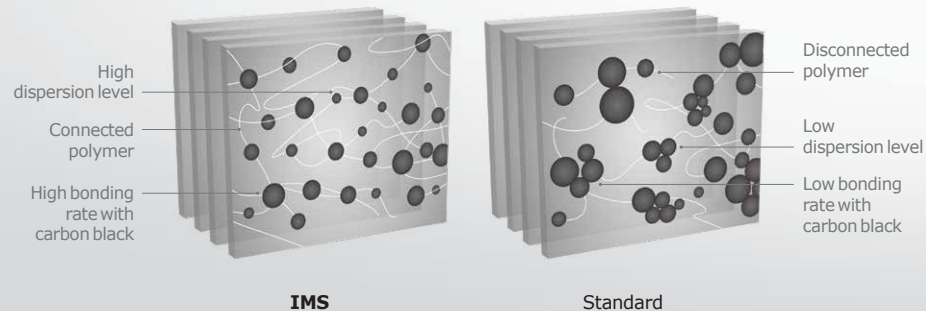
Innovative Mixing System

IMS (Innovative Mixing System) ensures long mileage and fuel efficiency.

Larger molecular weight by minimised breakdown of polymer chain

Increase of strength and decrease of heat generation

Long mileage and fuel efficiency



Improved Profile Design

SCCT: Stiffness Control Contour Theory

SCCT ensures an optimum stiffness and excellent contact shape while offering an improved safety, cornering and braking performance along with durability.



Flat carcass line design



Non-flat carcass line design

After the deformation

Before the deformation

AVAILABLE SIZES

| Size | LI/SS | Ply | Measured Rim | Max.Air | | | | Max.Load | | | | Overall Diameter | Section Width | Tread Width | Tread Depth | Static Loaded Radius | Tyre labelling class | | | Markings | |
|-------------|----------|-----|--------------|---------|-----|------|------|----------|------|------|------|------------------|---------------|-------------|-------------|----------------------|----------------------|---|----|----------|--|
| | | | | PSI | | bar | | kgs | | lbs | | | | | | | | | | | |
| | | | | S | D | S | D | S | D | S | D | | | | | | | | | | |
| | | | | | | | | | | | | mm | mm | mm | mm | SLR | | | | | |
| Tubeless | | | | | | | | | | | | | | | | | | | | | |
| 13R22.5 | 156/150K | P18 | 9.75 | 127 | 127 | 8.75 | 8.75 | 4000 | 3350 | 8820 | 7390 | 1124 | 317 | 244 | 18.5 | 525 | D | C | 71 | W1 | |
| 315/80R22.5 | 156/150K | P18 | 9.00 | 120 | 120 | 8.30 | 8.30 | 3750 | 3350 | 8270 | 7385 | 1080 | 316 | 248 | 16.1 | 498 | D | C | 71 | W1 | |

Technical data subject to change without prior notice.

Recommended vehicle types and position



● Recommended position ● Available position

Laufenn

HANKOOK TYRE UK LTD.

Fawsley Drive, Heartlands Business Park, Daventry, Northamptonshire, NN11 8UG, UK.

Tel : +44 (0)1327 304100 Fax : +44 (0)1327 304110

www.laufenn.com